

# All★Star

## identification systems, inc.

400 Morris Ave., Suite 241  
Denville, NJ 07834

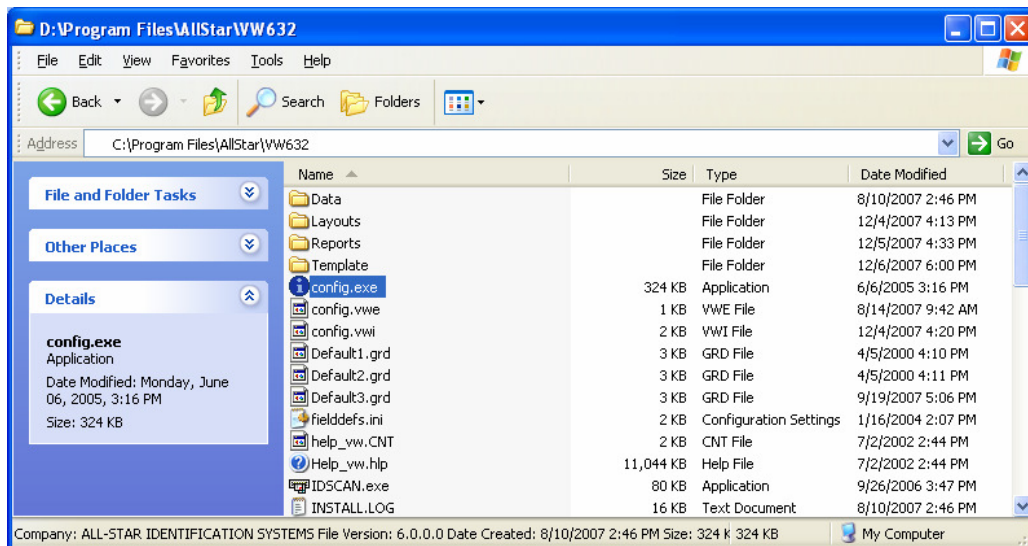
Phone: (800) 831 - 5771  
Fax: (973) 625 - 4104

www.allstarid.com  
info@allstarid.com



## How To Point All-Star Applications To A New Database Server

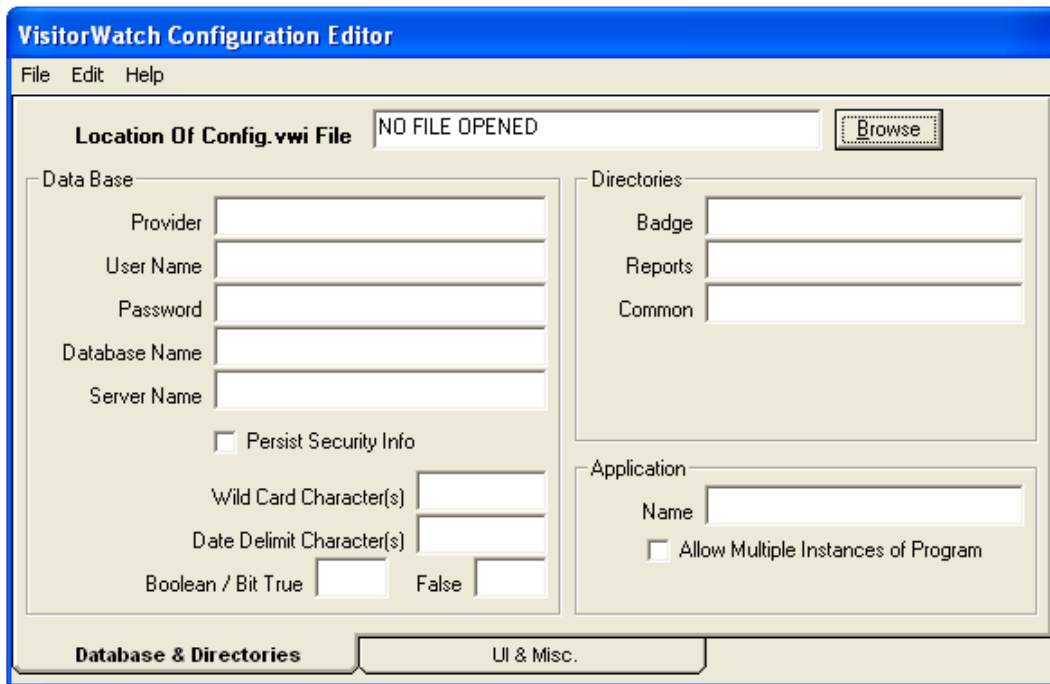
1. Browse to C:\Program Files\AllStar\VWxxx (where xxx is the version of Visitor Watch). Double-click on config.exe (the application, not config.vwe or config.vwi).



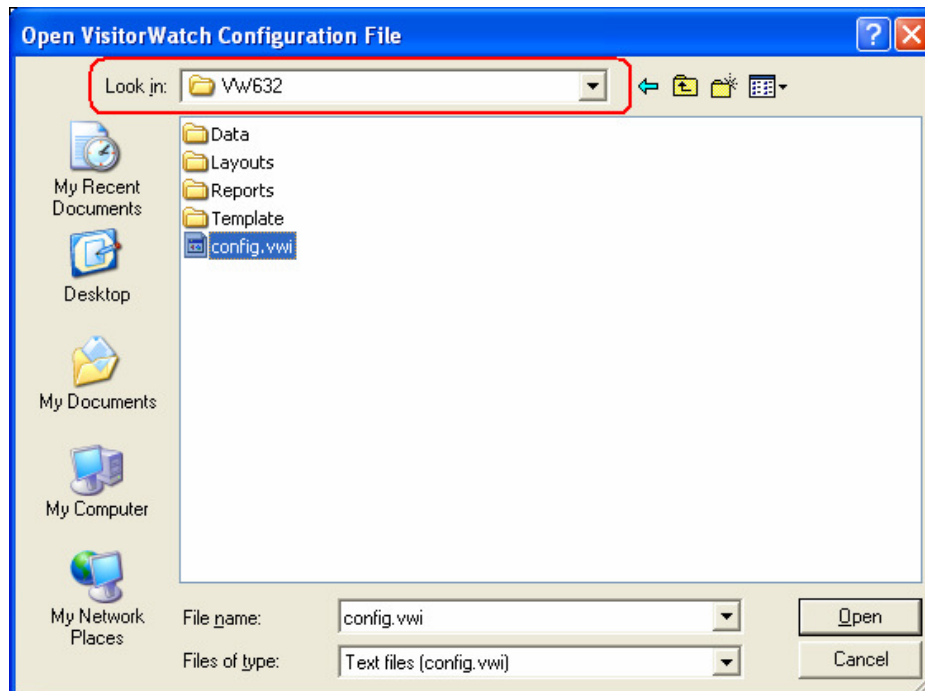
2. Login using VWSUPER600 or VSUPER500 depending on the version of the configuration editor. The password is the same as the username.



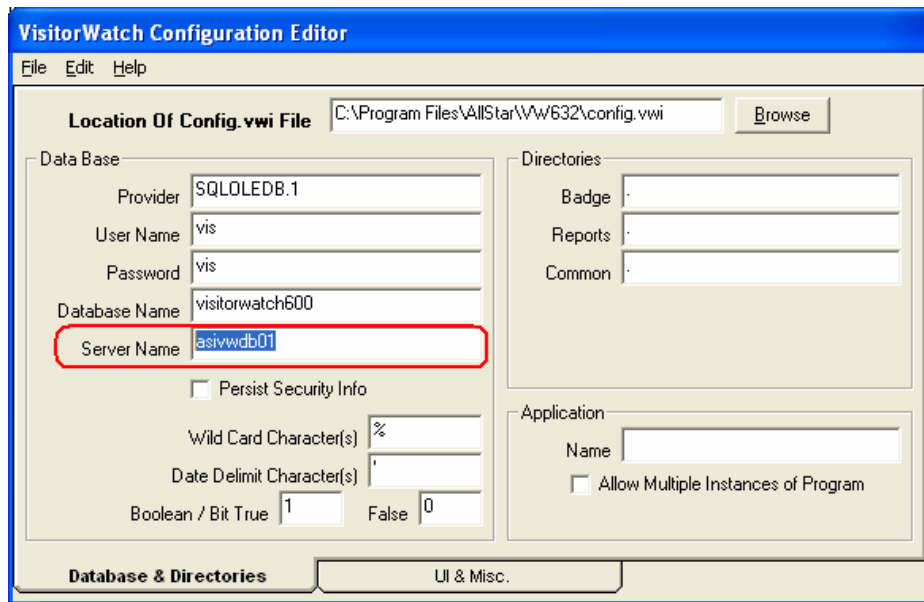
3. Click on the Browse button.



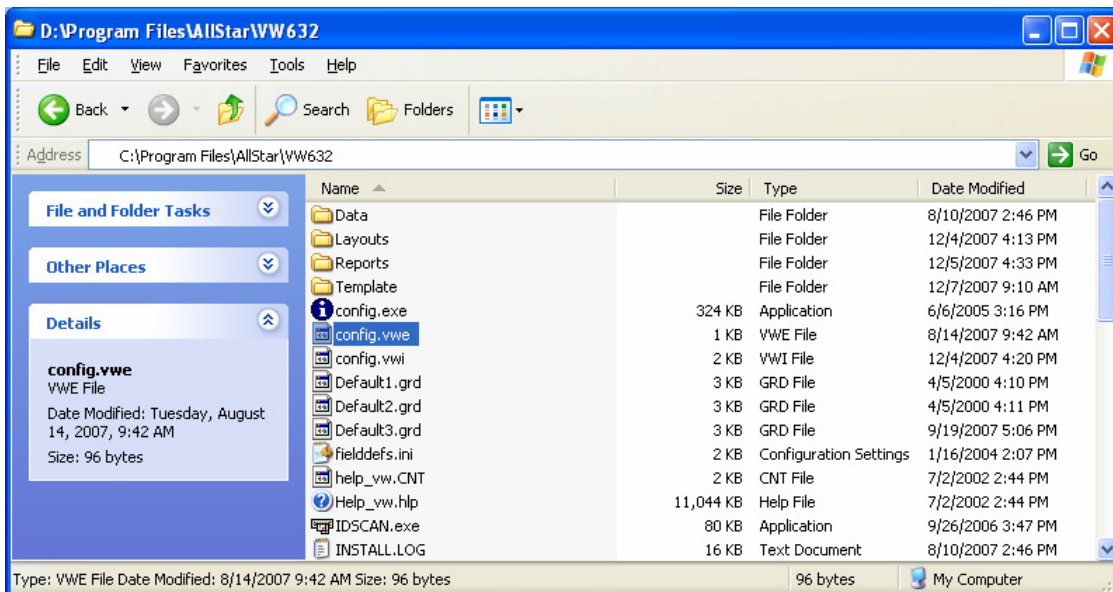
4. Make sure you are looking in the correct directory (for example, if you ran config.exe from the VW632 directory be sure the 'Look in' dropdown is in VW632. Otherwise you could configure the wrong application). Open config.vwi.



- Change the Server Name and any other info that may have changed (User Name, Password, or Database Name). Then save and exit.



- Now, browse to C:\Program Files\AllStar\WVxxx (where xxx is the version of Visitor Watch). Copy the **config.vwe** file (not the config.vwi file). This file is where the database connection information is stored (please see the All-Star Configuration File document for information on this file's encryption).



- You may now simply paste this file into each application directory on this PC and on any other PCs that are connecting to the same database.